



ART OF THE MUSEUM HOTEL



"I've been surrounded by art all my life and because this Hotel is my home, I wanted to share it with you. I hope you are entertained and even inspired by it."

Chris Parkin.



ABOUT THE ART OF THE MUSEUM HOTEL

A Wellington icon, the Museum Hotel is truly unique and so is its superb collection of original, contemporary New Zealand (NZ) art proudly displayed in the lobby and foyer areas.

The art of the Museum Hotel is for sharing with you, our guests and friends, and this catalogue introduces you to the collection.

The common thread of our eclectic collection is the nature of the human condition and each artist's attempt to make sense of it. The artworks question our culture, identity, and who we are.

Represented in our collection are established and respected New Zealand artists including Bill Hammond, Robin White and Brent Wong. Also represented are talented and emerging artists such as Dean Proudfoot and Sarah Courtney. The collection ranges widely from bejewelled birds to contemporary themes reflecting Chris Parkin's personal interests and thoughtful selection.



"Collecting art has not been a deliberate act. I've applied no specific formula, just simply bought art that I liked, considered clever and showed the artist knew what they were doing."

Chris Parkin.



VIEWING THE ART OF THE MUSEUM HOTEL

Each piece of art is numbered and is displayed together with a short description. The artworks can be found in the following spaces:

- Hotel Ground Floor Reception and Apartment Lobby
- Hotel Lobby – Level 2
- Hotel Lobby and Restaurant – Level 3
- Hotel Lobby and Hallway – Level 4
- Apartment Lobby and Fitness Centre – Level 1
- Apartment Lobby – Levels 2, 3, 4, 5 and 6
- Outside the Hotel.

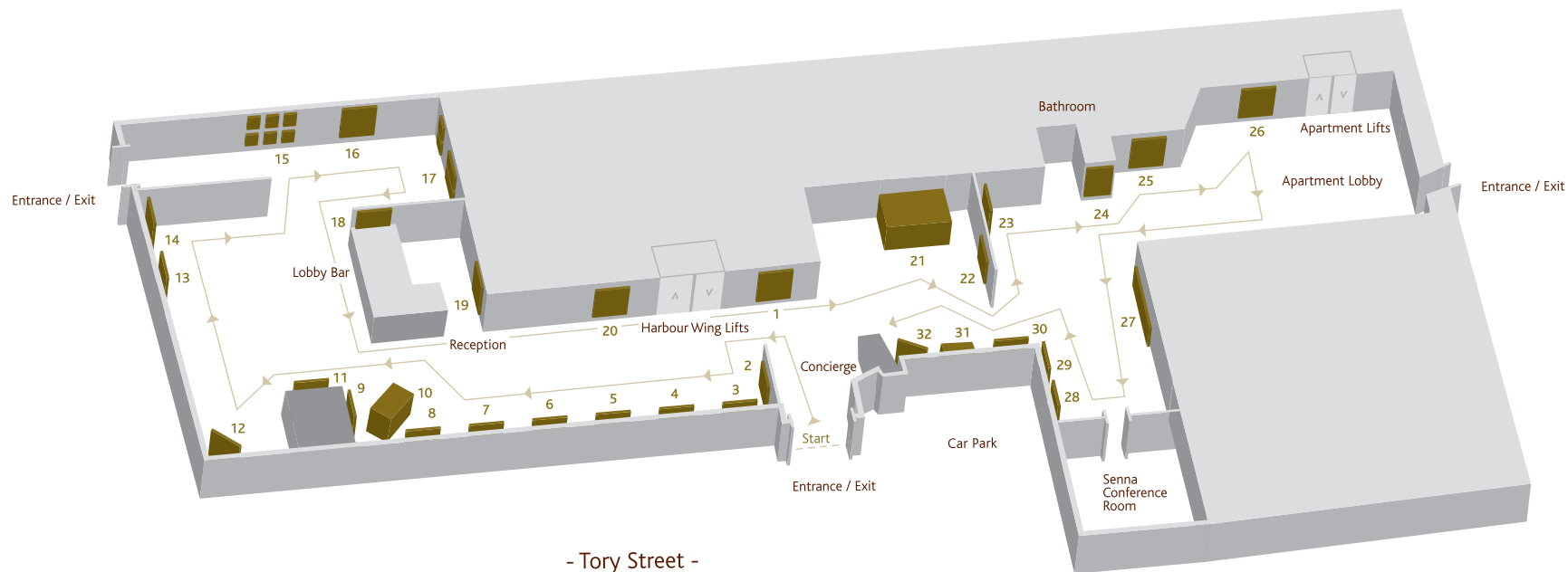
All of these floors are accessible to you. Simply follow the floor-plan detailed for the area and the recommended direction.

A 'Quick Find Index' listing the artworks by the artists name can be found at the back of this guide.

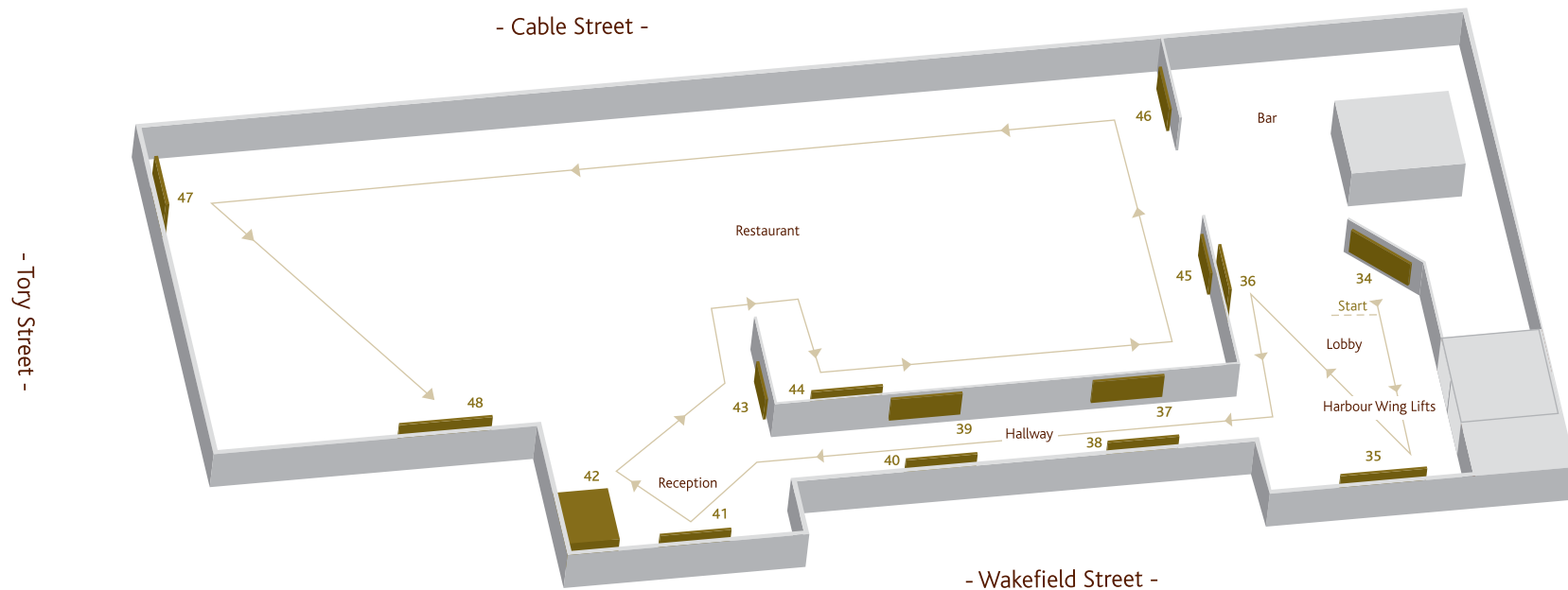
Museum Hotel owner, Chris Parkin, commissioned this guide. It was researched, written and compiled by Wellington artist Lynne Sandri whose work is included in the collection. Lynne's brief was to provide a concise and interesting précis of each piece using her artist's perspective. Lynne hopes that this guide will enhance your viewing of the Museum Hotel Art Collection and thanks Chris Parkin for the opportunity to be involved in its production.



HOTEL GROUND FLOOR RECEPTION AND APARTMENT LOBBY



HOTEL LOBBY AND RESTAURANT – LEVEL 3



HOTEL GROUND FLOOR RECEPTION AND APARTMENT LOBBY

1



ARTIST: Brent Wong (*West Coast*)

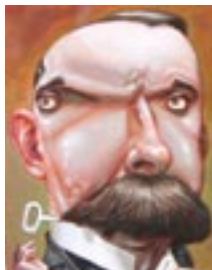
TITLE: Untitled – Construction, chimney pot and landscape

MEDIUM: Acrylic on board

This significant piece of art was purchased from the Collection of Roy and Juliet Cowan. These highly-regarded Wellington artists are strongly involved in the art and potting community.

Brent's work has been described as 'Surrealistic'. His symbolic content reflects mostly autobiographical material and scrupulously observed landscapes and simplified forms. His love of nature and the sky and his remarkable draughtsmanship are predominant in this painting.

2



ARTIST: Daron Parton (*Wellington*)

TITLE: The Key

MEDIUM: Acrylic on paper

Daron paints in a unique and individual style. It can best be described as an ode to Victorian portraits of extended family hanging in a rogues' gallery. Often the subjects are in full regalia, capturing absurd characteristics and pastimes that are beautifully ugly.

Daron is part of Watermark Ltd, a collective of illustrators for a global client base.

3



ARTIST: Nicky Foreman (*Auckland*)

TITLE: Distance Becomes Her

MEDIUM: Oil on board with metal bolt

Originally from New Plymouth, Taranaki, Nicky articulates her personal journey through life. Combining literal markers, such as signposts and landmarks, with symbols and metaphorical imagery, she considers our connection with place and the personal meaning of certain locations. Her compositions retain a painterly basis, yet often incorporate collage and three-dimensional media.

4



ARTIST: Nigel Brown (*Cosy Nook*)

TITLE: Developer

MEDIUM: Oil on linen

The artist's own bite-sized words are an important starter to Nigel's paintings. His distinctive hard-edged style and social commentary draws directly on the slang spoken in NZ.

This piece talks about NZ's inability to escape the awareness of lurking 'development'. Development eats into the cliffs, is full of goals, 'I AM's' and kites of ideas flown. The developers wear sunglasses, remote from the wood pigeon shown flying above. Development is done in the name of money and creating the illusion of security. The painting is not cynical but rather the reality of the human condition and of town versus country.

5



ARTIST: Viky Garden (*Wellington*)

TITLE: Girls and Dolls

MEDIUM: Oil paint on rough hessian, backed on smooth hardboard

Viky's figurative paintings reflect an innate sense of self within a post-feminist 21st-century view of NZ.

Use of simple domestic props enables her to express her personal views on universal topics. Fabric and pattern are important to link the past and present and combine gender, memory and historical references.

6



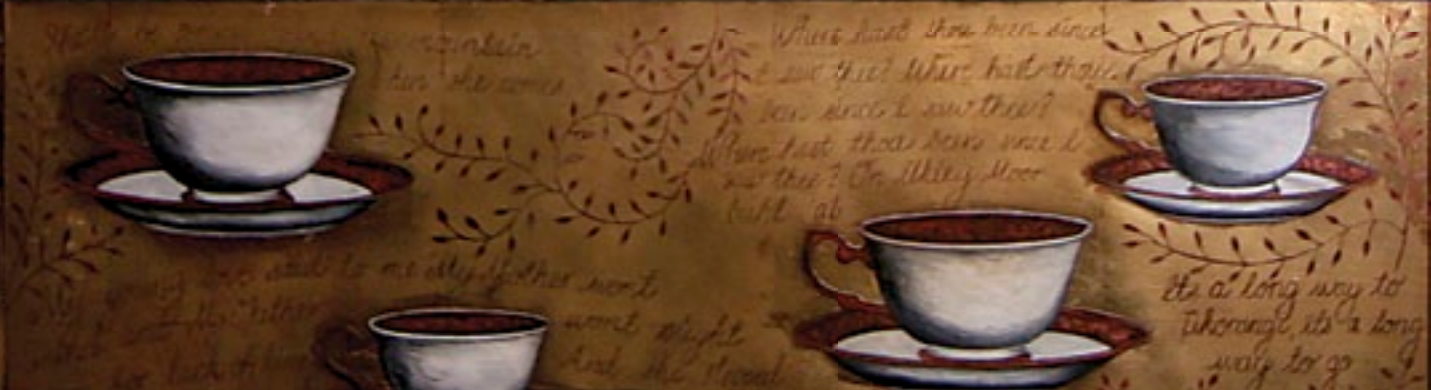
ARTIST: Sally Burton (*Nelson*)

TITLE: Relic

MEDIUM: Acrylic, gold leaf, wood panels, geo-textile and shaped wood

Sally's paintings hover between representational and dream worlds and continue a theme of bowl and vessel forms. Her images shift between solid and liquid and the place where land meets sea and nature.

This piece speaks of the memory of our extinct huia bird.



7



ARTIST: Grant Hanna (*Auckland*)

TITLE: I Dream of Fishes

MEDIUM: Acrylic on canvas

Grant is a surrealist painter with a dry and witty sense of humour. His thought-provoking works are a bizarre interpretation of the familiar.

This painting depicts the Mona Lisa with her Māori cloak, washing up gloves and beautiful tropical fish floating around her paper-bagged head.

He experiments with reality, humour and personal perversity.

8



ARTIST: Robin White (*Wellington*)

TITLE: Hills of Porirua

MEDIUM: Oil on canvas

Robin is well known for her distinctive, hard-edged, realist images of NZ rural and urban landscapes. She has a strong affinity with her subject. Her family has been here for many generations going back to the time before the first Pākehā settlers of the Bay of Plenty area. Her subject matter reflects her environment and the way she was brought up. She sees herself as a recorder of the reality of a situation.

Her paintings are of a flat nature, showing hills and landscapes in characteristic silhouette form.

9



ARTIST: Todd Couper

TITLE: Strong Woman

MEDIUM: Bronze and horse hair

Todd is a promising Māori artist from the Ngāti Kahungunu iwi. He has forged his own distinctive style and direction in wood carving and sculpturing, encapsulating his vision and understanding of Māoridom.

10



ARTIST: Massimo Tamburini – genius design engineer (*Italy*)

TITLE: MV Agusta Tamburini F4-1000c Four Cylinder Engine

MEDIUM: Sports Motorcycle

This is one of a limited edition of 300 motorcycles. It has the heart of a racing bike, yet all the glamour of an individual work of art. Massimo felt he had achieved his dream of producing the fastest, the most beautiful and powerful, exclusive, sought-after motorcycle available. As it is part of this collection, Chris Parkin, rarely gets the chance to take this baby for a spin.

11



ARTIST: Raymond Ching (*born in Wellington, now works from studios in England and Wellington*)

TITLE: Drumbearer / The Mourning of Laura Buller

MEDIUM: Oil on canvas on panel

Raymond is a world-renowned contemporary bird painter and also an artist of considerable standing for his portrait and animal life paintings.

This particular painting is about loss – loss of hope, dreams and species leading to extinction. He has used a contemporary representation of Walter Buller's wife, Laura, to cradle the dying female Huia, representing the last of her species. (Walter Buller was a controversial author and expert on the study of NZ native birds). It was Laura who made the only drawings ever sketched from a living Huia. The comic book pages in the background represent the world that these people and other animals inhabit.

12



ARTIST: Stephen Martyn Welch (*Auckland*)

TITLE: Willie Nelson

MEDIUM: Oil on canvas

Stephen is regarded as one of NZ's most promising portrait artists.

The strength in his work is his ability to be a compassionate observer and portray the humanity and personality of his subject. Stephen questions and concentrates on identity, culture and circumstance through portraiture. He attempts to reveal the mood and the real personality of the subject sitting before him.

In 2008/2009 Stephen hosted a television show 'The Sitting' on TVNZ's Channel 6 where he painted portraits of NZ celebrities as he interviewed them.

13



ARTIST: Meredith Parkin (*Wellington*)

TITLE: Shift

MEDIUM: Acrylic, photos and ink on canvas

Meredith is a promising emerging artist and her experience in printmaking, photography, art history and history is reflected in this particular painting.

The subject matter deals with her perception of time, death, reality and surrealism.

14



ARTIST: Lee Gutterson (*Wellington*)

TITLE: The Last Tuna

MEDIUM: Wood, steel and paua

Lee's work is semi-realistic renditions generally made of wood and steel. In addition to his talent for creating fish and marine life sculptures, he also designs and makes custom furniture.

15



ARTIST: Colleen Hannah (*Wellington*)

TITLE: Mask Collection (*8 Various*)

MEDIUM: Ceramic and mixed media

Colleen honed her skills through study in Venice. She imports material from Florence to create her unique masks. These masks are traditionally styled and handmade. Colleen's work has been commissioned by many clients including Olivia Newton-John.



16



ARTIST: Michael Smithers (*Coromandel*)

TITLE: Early Morning Warning

MEDIUM: Oil on board

Michael is a well known and admired artist. Typically, he simplifies, thereby highlighting the most symbolic elements. He hints at both environmental and religious concerns, invoking water as a symbol of purity. Michael is an active conservationist.

17



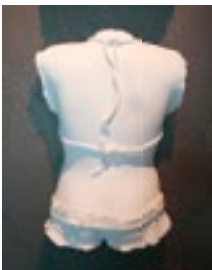
ARTIST: Maxine Waters (*Nelson*)

TITLE: x2 White Torsos

MEDIUM: Ceramic

The Nelson area of NZ gained international attention for the much-loved, wildly creative World of Wearable Art show which started there. Maxine's work symbolises iconic Wearable Art.

She has been working and teaching in ceramics and paint for many years in a small community called Teal Valley near Nelson.



18



ARTIST: Sarah Courtney (*Whanganui*)

TITLE: Views on Vine

MEDIUM: Etched and painted glass
(located above the bar)

Sarah uses clever and diverse angles of glass to represent the wines and temptations of the Museum Hotel Bar, located underneath the artwork.

See also 'Glass Desserts' in the Restaurant and 'Arnolfini Wedding' in the Hotel Lobby Level 2.

19



ARTIST: Dean Proudfoot (*Wellington*)

TITLE: Tame Performs in a NZ Landscape

MEDIUM: Oil on canvas

Dean's paintings tease out wit and fun by mixing NZ cultural icons (such as McCahon-esque landscapes) with NZ personalities who are cemented in our visual and cultural language.

This painting depicts Tame Iti, a Māori activist who enjoys being in the limelight. Tame Iti performed a Shakespearean play, spoken in Māori, whilst in the UK. We see him contemplating the skull of Horatio and a gun. This is the gun he famously used to shoot the NZ Flag during a Waitangi Tribunal Hearing. The backdrop is a representation of Iti's tribal land; the Ureweras. Iti's tribe, the Tūhoe, are called 'The Children of the Mist'.

20



ARTIST: Geoff Dixon (*Cairns*)

TITLE: Large Takahē with Sparrow

MEDIUM: Enamel paint and lacquer on canvas

This is a portrait of an endangered NZ bird, the Takahē, and the common sparrow. It is a metaphor of humans in an era of technology where the human condition is overstressed.

Rain (red and teal blue paint) streams down the painting evoking a feeling of welcome for the birds in their own environment. Nevertheless, the birds are poised on a plane of potential, at the cusp of the past, this moment and all the possible futures beyond. The alien sci-fi landscape brings to mind the fantasy of childhood images and the possible futures they suggest.

21



ARTIST: Gregor Kregar (*Auckland*)

TITLE: I Disappear (*white*)

MEDIUM: Glazed stoneware

These sculptures are replicated clay versions of the artist himself in various scales. Each replica is created from the form of the last mould. The shrinkage that occurs questions the notion of 'I shrink therefore I am' and 'the more you look at yourself, the less you see' signalling a removal of self or a denial of the artistic ego.

22



ARTIST: Ian Scott (*Auckland*)

TITLE: McCahon 11.9.62

MEDIUM: Oil and screen print on canvas

Ian Scott is regarded as one of NZ's few Pop artists. This work is from a series of 'paintings about painting'. Like a screen print, sharp-edged rectangular areas of monochrome colour are masked on top of a background of traditional landscape painting. His iconic images hint at the relationship between popular culture and 'highbrow' art, questioning what it is that determines the elevation of an image to this level.

23



ARTIST: Lynne Sandri (*Wellington*)

TITLE: Native New Zealanders

MEDIUM: Textured oil on canvas/board

Lynne's paintings are bold and incredibly tactile, enticing the viewer to reach out and touch them. These five panels of native plants are rich in symbolism:

Toe-Toes (*wind and movement of Wellington*)

Karaka Berries (*healing*)

Flax (*family unity*)

Pōhutukawa (*vibrancy, energy and summer*)

Nīkau Palm (*strength and achievement*).

See also 'the Wearer Series' in the Restaurant Lobby, and 'Ahh..The Quarter Acre Dream' in the Restaurant.

24



ARTIST: David Knowles (*Greytown*)

TITLE: Lady by Open Window

MEDIUM: Oil on board

David thinks of himself as a romantic, and specialises in renaissance-style painting. The subject here was his girlfriend, Jo, at a time when he was younger. Jo posed for him in a chocolate brown walled room with dramatic light and shadows. He completed this painting languidly so as to enjoy the look of his subject and get her 'just right'. David is currently working on a series of copies of the Old Masters' paintings.



25



ARTIST: Paul Vincent (*Wellington*)

TITLE: Umeeah

MEDIUM: Acrylic on canvas

Paul uses painting as a form of meditation. Working with a limited colour palette, and symbols, most of his work is done through the building up of layers. Paul describes this method as "looking and searching for the truth, a slow release over fast burn". His paintings allow the viewer to ponder over them, rather than giving away their secrets immediately.

26



ARTIST: Peter Morin (*Canada*)

TITLE: I wear this on my body

MEDIUM: Lithographic textile with paua shell nipples

This artist is a curator, a writer and a leader of indigenous Canadian youth in various projects. He therefore has a strong multicultural heritage to draw upon. The images shown on his body tell of his family and the stories of his nation. An accompanying poem speaks to these images. This artwork was part of a group show that profiled next generation Māori and indigenous artists, called 'He Rere Kee – Taking Flight'. The exhibition celebrated the past whilst voicing concerns and issues of the present.

27



ARTIST: Buck Nin (*Auckland*)

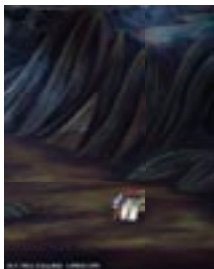
TITLE: Bay of Islands –
Tai Tokerau Country 1986

MEDIUM: Oil on board

The late Dr Buck Nin is a highly-respected artist of Māori and Chinese descent. Māori symbolism, forms derived from customary carving and kōwhaiwhai designs, join with European modes of landscape into a single image.

This painting explores the painful process of Māori adapting to modern urban life. It offers the hope of togetherness by melding landform and Māori design.

28



ARTIST: Dean Proudfoot (*Wellington*)

TITLE: Billy Buys from an Honesty Box in a NZ Landscape

MEDIUM: Oil on canvas

This work is a salute to the artist Billy Apple. Apple is a NZ 'Pop' artist whose work is a study of 'What is Art'. Here he takes the sign for the honesty box and purchases the advertising rather than the product.

See also 'Tame Performs in a NZ Landscape' in the Hotel Reception.

29



ARTIST: Dean Proudfoot (*Wellington*)

TITLE: Gordon Bowls Dick a Googly in a NZ Landscape

MEDIUM: Oil on canvas

Dean's paintings tease out wit and fun by mixing NZ cultural icons (*such as McCahon-esque landscapes*) with NZ personalities who are cemented in our visual and cultural language.

This painting is a play on the idea of cultural appropriation. Here the artists Gordon Walters and Dick Frizzell (both recognised for their appropriation of Māori motifs) play a game of cricket.

See also 'Billy Buys from an Honesty Box in a NZ Landscape' in the Apartment Lobby on the Ground Floor and 'Tame Performs in a NZ Landscape' in the Hotel Reception.

30



ARTIST: Angela Singer (*Dunedin*)

TITLE: Flight of Fancy

MEDIUM: Bejewelled Stuffed Duck and Pheasant (*Sculpture hanging from ceiling*)

Recycling vintage taxidermy is the key to Angela's work (the birds were donated to her). She questions the notion that people are inherently separate from but superior to other species. She alters the traditional practices of taxidermy, which shrink the creature, by incorporating unnatural elements/environments. This gives the bird or animal back its presence, making it too big to ignore. She also challenges the culture in which hunting trophies are so prevalent, accepted, taken for granted and treated like cosy furniture for the wall.

31



ARTIST: Bill Hammond (*Lyttelton*)

TITLE: 21st Birthday Present

MEDIUM: Wooden steel wire nail box

A rare example of Bill's early work as a toymaker. He is better known for his haunting half-human, half-bird paintings. This box is of interest because it shows Hammond working with everyday objects in an inventive way. This technique was repeated later with his screen works and paintings made on bar tops and tables. The shapes on the lid of the box are a removable 21st birthday key and a number of identical mountain ranges (these appear in his paintings as well). His signature appears on the inside of the box and is dated 1979.

Bill is firmly established as one of NZ's most renowned and highly-respected artists.

32



ARTIST: Simon Mee (*Queensland*)

TITLE: The Attack of the 60 ft Vermeer inspired women and despondent chicken

MEDIUM: Oil on linen

Simon's distinctive use of children's playthings strikes an uncomfortable chord. This piece resonates with the work of early sixteenth century Dutch artist Johannes Vermeer.

Vermeer's intricate works are considered pinnacles in the history of art. The styles of bonnet and the apron are appropriate to that period and convey an opulence that is at odds with the Brisbane streets of today depicted in the painting. The oversized doll, which relates to old B-Grade movies, gazes off into the distance unaware and uncaring, not terrorising. The artist points to the foibles of life, the nuances of living.

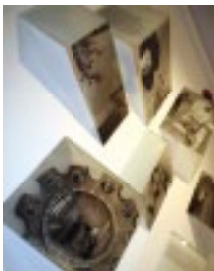
*"Art is bad for the budget
but good for the soul."*

Celia Dunlop.



HOTEL LOBBY LEVEL 2

33



ARTIST: Sarah Courtney (*Whanganui*)

TITLE: Arnolfini Wedding

MEDIUM: x7 pieces of etched and painted glass

Sarah's clever use of glass at different angles gives an insight into periods of her fathers' life and his poetry. There are also personal messages from her family and images by Jan Van Eyke.

See also 'Glass Desserts' in the Restaurant and 'Views on Vine' in the Hotel Reception.

HOTEL LEVEL 3 | Lobby

34



ARTIST: Duncan Smith (*Wellington*)

TITLE: Rob Coming

MEDIUM: Oil on board

Duncan is a self-taught artist who enjoys capturing the essence of people he observes.

His two paintings ('Rob Coming' and 'Rob Going') are of the late Robert (Rob) Jones, a transient local identity seen wandering Wellington streets for 20 years. Rob was also known as 'The Bucket Man' for the bucket in which he carried his possessions. The artist says Rob forced society to look at itself. "If Rob's coming towards us, how do we greet him? What do we do, do we just ignore him, do we just pass by?"

See 'Rob Going' inside the Restaurant.

35



ARTIST: Wendy Leach (*Auckland*)

TITLE: Pienza Valley (*Tuscany*)

MEDIUM: Oil, gouache and pastel on board

A well travelled and extensively exhibited artist, Wendy is best known for her mixed media paintings of French, Italian and NZ landscapes.

36



ARTIST: Lynne Sandri (*Wellington*)

TITLE: The Wearer Series; In Touch, Waterworld, The Gourmet, Home and Family Handbag collection

MEDIUM: Acrylic and oil on canvas

Lynne's quirky commentary on daily life and existence examines how the contents of a woman's handbag reflect the personality and lifestyle of its owner.

See also 'Ahh..the Quarter Acre Dream' inside the Restaurant and 'Native New Zealanders' in the Apartment Lobby.

37



ARTIST: Richard Adams (*Wellington*)

TITLE: Faraway

MEDIUM: Oil/acrylic on canvas

Richard is well known as an abstract painter and jazz violinist. He believes the improvisation in painting and music are similar. His minimalist planes of vertical and horizontal panel motifs, curves and lines, are inspired by and abstracted from nature, colours, textures, shapes and surfaces. This artwork does not have an overt origin. Rather, it has been drawn from overlooked corners of the world such as the roadside, buildings or railway wagons.

38



ARTIST: Hariata Ropata Tangahoe (*Otaki*)

TITLE: La Prima Donna Piotti
(*Martha Piotti-Carceek*)

MEDIUM: Acrylic and metallic pigment on stretched canvas

Hariata's work has been described as naïve, yet intuitive. Her portraits suggest a sense of self, a blend of myth, history and statements of identity. In the artists words "who I think I am". Hariata's work has been compared to portraits of the Mexican painter Frida Kahlo.

Her multi-generational figures are family (her whakapapa), a living manifestation of all who have gone before. In this painting are the artist's great-great grandmother, Martha Piotti-Carceek (born in Northern Italy), and Martha's husband, Captain Carceek, Controller of Customs in Wellington in the 1850s.

39



ARTIST: Gail Gauldie (*Wellington*)

TITLE: Passage to Memory VII

MEDIUM: Oil, tar, frayed cloth, paper on canvas

Gail's work is about layering ideas of time, memory and the telling of our own stories. It moves between varying shades of dark and light to express thoughts of past, present and the future. Tar portrays darkness, cloth is sacredness and memory, white is about the future, light and spirituality and gold is precious and rich emotions.

40



ARTIST: Heather Wilson (*Napier*)

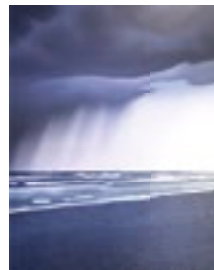
TITLE: Dinner at Eight, Coffee and Cake

MEDIUM: Acrylic and resin on canvas

Use of bold colour and texture is a distinctive trademark of Heather's work. Her double degree in food science and nutrition naturally influences the content of this collection of paintings.

HOTEL LEVEL 3 | Restaurant

41

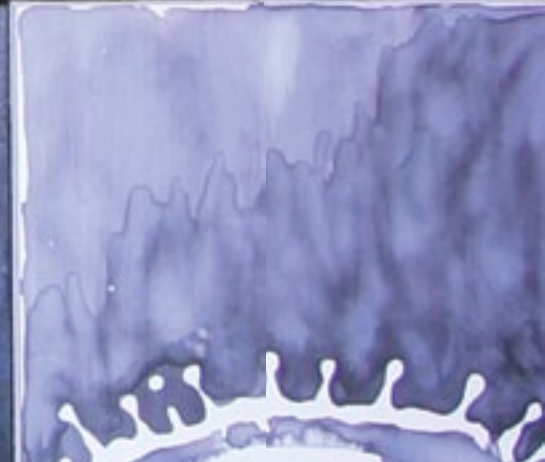
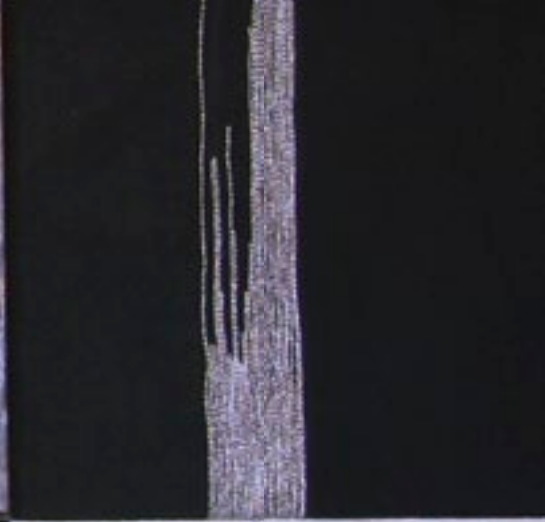


ARTIST: Stephen Howard (*Auckland*)

TITLE: Grey Stones

MEDIUM: Oil on board

Meticulous attention to detail is evidenced in Stephen's artwork. Look closely at how each stone is painted. He encapsulates the NZ landscape in a delicately dreamlike atmosphere after stripping the scenery of all but its basic shapes. Stephen's artwork captures the spirit of a place, leaving a lasting emotional impression.



42



ARTIST: Sarah Courtney (*Whanganui*)

TITLE: Glass Desserts

MEDIUM: Etched and blown glass

Sarah uses intricately blown, sandblasted and etched glass to provide powerful multi-faceted images and sculptures overlaid with an element of gentle wit. The menu explains the desserts that are to be savoured... very carefully.

See also 'Views on Vine' in the Ground Floor Reception and 'Arnolfini Wedding' in the Hotel Lobby Level 2.

43



ARTIST: Philip Markham (*Wellington*)

TITLE: Madame Butterfly

MEDIUM: Ink, acrylic and gold leaf on paper

This artwork is the original hand-painted costume drawing from Madame Butterfly. Philip has designed several productions for the Royal NZ Ballet and was in-residence designer for the National Opera. He has also designed productions of Carmen, Eugene Onegin, Don Giovanni and Madame Butterfly.

44



ARTIST: Fran Dibble (*Palmerston North*)

TITLE: In These Drops the Universe is Contained

MEDIUM: 12 panels (*2 bronze and 10 primed hardboards*) with stitched fabric and various paints

An eclectic mix of media and subject create interest in this artwork. Masculine metalwork contrasts with feminine materials, all styled into folk work with images running from one panel to the other. Fran's observation of life with water is the continual theme in this piece. Fran is also a writer and has contributed essays to the book 'Paul Dibble', which is about the work of her partner, well-known bronze sculptor, Paul Dibble.

45



ARTIST: Duncan Smith (*Wellington*)

TITLE: Rob Going

MEDIUM: Oil on board

Duncan is a self-taught artist who enjoys capturing the essence of people he observes.

His two paintings ('Rob Coming' and 'Rob Going') are of the late Robert (Rob) Jones, a transient local identity seen wandering Wellington streets for 20 years. Rob was also known as 'The Bucket Man' for the bucket in which he carried his possessions. The artist says Rob forced society to look at itself. "If Rob's coming towards us, how do we greet him? What do we do, do we just ignore him, do we just pass by?"

See also 'Rob Coming' in the Restaurant Lobby.

46



ARTIST: Dick Frizzell (*Hawke's Bay*)

TITLE: The Second Metaphysical Cheese

MEDIUM: 21/100 Limited edition print

Dick's paintings are filled with loaded images that take on unusual, original and often sharply critical meanings because of the way he treats them. He has a mocking view of art and the world. His work tends to deal with the conventions of representation. He imitates labels and uses comicbook figures for his imagery, reflecting his early exposure to commercial advertising.

This limited edition artwork was commissioned by Kapiti cheesemaker's to promote their range of popular cheeses.

47



ARTIST: Daniel Campion (*Nelson*)

TITLE: Swimming with Fishes

MEDIUM: Wood, resin and real fish

Daniel's work is about the human condition, the fusion and design of matter, and spirit. To him, art is a platform to explore the profound and the unknown.

He seeks to draw you into the artwork to show the fundamentals of the fabric of existence where he can explore his anxiety of matter (anxiety being decay or decomposition).



ARTIST: Lynne Sandri (*Wellington*)

TITLE: Ahh..the Quarter Acre Dream

MEDIUM: Oil on canvas

Lynne's paintings speak about our language and generally-accepted myths such as the 'Quarter Acre Dream'; the desire for home ownership and the pleasure of maintaining it. She dips into and challenges what it feels like to live on an evolving small island, here at the corner of the world.

Her works have a whimsical edge, revealing some of the past that has shaped her and her current observations.

See also 'the Wearer Series' in the Restaurant Lobby and 'Native New Zealanders' in the Apartment Lobby.

HOTEL LEVEL 4 | Lobby and Hallway



ARTIST: Madeleine Casey (*Auckland*)

TITLE: Beauty is in the Eye of the Beholder

MEDIUM: Oil on board

Madeleine's figurative paintings deal with issues of female identity and life in a society where the media creates, controls and manipulates. Her paintings are a combination of images and text interacting with each other on canvas.

See also 'Loved 'on the same floor.



ARTIST: Sir Toss Woollaston

TITLE: The Figures 1/10
The Lithographer at Work 7/10

MEDIUM: Crayon on paper

Sir Toss Woollaston was among the founders of modern art in NZ and was recognised as such when knighted for his services to art in 1979 - the first artist in NZ to be awarded this honour.



Sir Toss is perhaps best known for his large-scale landscape oil paintings, but he was also prolific in watercolour and works on paper. He used these mediums not only for preparatory sketches but also considered them complete works on their own. His watercolours and crayon drawings show freshness and immediacy, reflecting his spontaneous approach to painting.



MEMOR
COMPOSES
OW
TRUTH

52



ARTIST: Glenda Roberts (*Wellington*)

TITLE: View of Oriental Parade

MEDIUM: Acrylic on paper framed

Glenda is known for her colourful and simple paintings of views taken around Wellington. Glenda and the late Shona McFarlane often painted together, each depicting the same scene whilst using their own distinctive style.

53



ARTIST: Madeleine Casey (*Auckland*)

TITLE: Loved

MEDIUM: Oil on board

Madeleine's figurative paintings deal with issues of female identity and living in a society where the media creates, controls and manipulates. Her paintings are a combination of images and text interacting with each other on canvas

See also 'Beauty is in the Eye of the Beholder' on the same floor.

54



ARTIST: Reg Mombassa
(*a Kiwi who now lives in Australia*)

TITLE: Skirting the Rim of Hell

MEDIUM: 20/30 Limited edition print

This multi-talented artist formed the successful rock band 'Mental as Anything' and is well recognised for his Mambo tee-shirt and poster graphics. Reg is inspired by the wind, semi-professional birthday clowns, heavy machinery and the behaviour of domestic animals.

APARTMENT LOBBY AND FITNESS CENTRE LEVEL 1

55



ARTIST: Anne Munz (*Wellington*)

TITLE: Standing Dryad with Tree

MEDIUM: Oil and enamel on canvas

The theme of Anne's work is the relationship between biological life and landforms. The tree serves as a symbol of life, one that nourishes the human body in a thousand different ways, and a symbol of sturdiness and vigorous growth.

56



ARTIST: Monique Richards
(*Western Australia*)

TITLE: No Robot

MEDIUM: Oil on canvas

Monique paints figurative works with abstract elements. They reflect issues and situations facing young women. Monique is an emerging artist who believes that an audience can find their own meaning in a piece of art, and that by sharing that which is personal, you can relate to others.

She has recently won the 2008 'Black Swan' prize for her portrait of the musician John Butler. The 'Black Swan' prize for portraiture is Western Australia's answer to the Archibald Prize.

APARTMENT LOBBY LEVEL 2

57



ARTIST: Linda Fowles-Savell (*Wellington*)

TITLE: x3 Torsos

MEDIUM: Ceramic

Linda creates life-like torsos of people with clothing intricately made from ceramics.

APARTMENT LOBBY LEVEL 3

58 & 59



ARTIST: Gretchen Albrecht (*Auckland*)

TITLE: Sea of Faith 22/40 (54)
At this hour 21/36 (55)

MEDIUM: Lithograph

Gretchen's signature-shaped formats are the hemisphere (half circle) and the oval. These formats are associated with states of mind. Combining the formats with colour and geometry evokes images with a clear poetic impulse, in which references to landscape, family and the cosmos act as emotional points of departure.



APARTMENT LOBBY LEVEL 4

60



ARTIST: Gretchen Albrecht (*Auckland*)

TITLE: Astronomies

MEDIUM: Lithograph

"The greatest obstacle to understanding a work of art is trying too hard".

Bruno Munari.



APARTMENT LOBBY LEVEL 5

61



ARTIST: Wendy Lineham (*Nelson*)

TITLE: Kowaruwaru-Tanga

MEDIUM: Acrylic on canvas

Wendy combines the modern with the past. She infuses our cultural heritage into pieces that provide a little jest along with thoughtful insight into who we are as New Zealanders and the influence of British colonialism.

APARTMENT LOBBY LEVEL 6

62



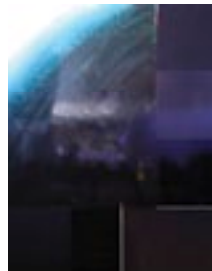
ARTIST: Terry Parkin (*Nelson*)

TITLE: Table

MEDIUM: Wooden table with blue glass inserts and one draw

Terry uses a variety of timber and cast glass to draw a cultural and technological line. A line that pays respect and reverence to all previous craftspeople who, over the ages, have perfected the use of stone, silk, flax, glass, steel and other media. The skills and teachings of these craftspeople have benefited the artist. His furniture has a combination of hard edges and straight lines juxtaposed to soft edges and lines. This equates to a balance between logic, intellect, emotion and heart. His work offers a glimpse of diversity and richness, of where we may have come from and a positive vision of where we may be going. See more furniture in the Apartment Lobbies on Level 2, 3, 4 and 5.

63



ARTIST: Paulus McKinnon (*Gisborne*)

TITLE: Queens Chain Sections

MEDIUM: Tiles on aluminium on board

Paulus is both an artist and a sign-writer. His work explores past and present relationships, both human and environmental. It speaks of discovery, loss and preservation. He creates symbolic stories using various combinations of materials including enamel paint, aluminium and vinyl.



APARTMENT LOBBY LEVELS 1-6

64



ARTIST: Jane Brimblecombe (*Wellington*)

TITLE: Decorative Mirrors

MEDIUM: Cut mirror mounted

These handmade mirrors have been specially commissioned, and designed, to enhance the boutique décor of the new apartment addition to the Hotel.

There are two mirrors on each floor.

OUTSIDE THE HOTEL

65



ARTIST: Cathryn Munro (*Wellington*)

TITLE: Per Capita

MEDIUM: Corten steel plate (*designed to look rusty*)

This commissioned large steel sculpture is a result of a successful partnership with Chris Parkin, the Wellington Sculpture Trust and the Wellington City Council.

The title 'Per Capita' means 'for each head of population'. The gigantic silhouettes form a four-piece puzzle.

The silhouettes are based on real people coming from one family showing different ages, sex and ethnicity but designed to represent a national family portrait. Cathryn wanted us to think about our own personal family complexities and cultural diversities and maybe how that would look and work as one large New Zealand family.

66



ARTIST: Justin Smith

TITLE: Combination of three Henri Rousseau paintings

MEDIUM: Mural (*Acrylic paint*)

This mural was commissioned by Chris Parkin to incorporate paintings by his favourite artist Henri Rousseau.

Henri Rousseau was a working class French post-impressionist painter of the late 18th century. His jungle paintings are scenes of wild animals including tigers, monkeys and buffalos. It was assumed that he was inspired by images of the Botanical Garden in Paris and photographs of wild beasts.

Justin chose three paintings to create a fantasy theme which he felt best suited the eccentricity of the Museum Hotel with all its mystery.

QUICK FIND INDEX *(in alphabetical order by artist's name)*

No	Artist Name	Title of Artwork	Location
37	Adams, Richard	Faraway	Hotel L3 Restaurant Lobby
58	Albrecht, Gretchen	Sea of Faith	Apmt Lobby L3
59	Albrecht, Gretchen	At This Hour	Apmt Lobby L3
60	Albrecht, Gretchen	Astronomies	Apmt Lobby L4
64	Brimblecombe, Jane	Decorative Mirrors	Apmt Lobby L1-6
4	Brown, Nigel	Developer	Hotel Ground Floor Reception
6	Burton, Sally	Relic	Hotel Ground Floor Reception
47	Campion, Daniel	Swimming With Fishes	Hotel L3 Restaurant
49	Casey, Madeleine	Beauty is in the Eye of the Beholder	Hotel L4 Lobby
53	Casey, Madeleine	Loved	Hotel L4 Lobby
11	Ching, Raymond	Drumbearer/The Mourning of Laura Buller	Hotel Ground Floor Reception
9	Couper, Todd	Strong Woman	Hotel Ground Floor Reception

No	Artist Name	Title of Artwork	Location
42	Courtney, Sarah	Glass Desserts	Hotel L3 Restaurant
18	Courtney, Sarah	Views on Vine	Hotel Ground Floor Reception
33	Courtney, Sarah	Arnolfini Wedding	Hotel Lobby L2
44	Dibble, Fran	In These Drops the Universe is Contained	Hotel L3 Restaurant
20	Dixon, Geoff	Large Takahe with Sparrow	Hotel Ground Floor Reception
3	Foreman, Nicky	Distance Becomes Her	Hotel Ground Floor Reception
57	Fowles-Savell, Linda	X3 Ceramic Torsos	Apmt Lobby L2
46	Frizzell, Dick	The Second Metaphysical Cheese	Hotel L3 Restaurant
5	Garden, Viky	Girls and Dolls	Hotel Ground Floor Reception
39	Gauldie, Gail	Passage to Memory VII	Hotel L3 Restaurant Lobby
14	Gutterson, Lee	The Last Tuna	Hotel Ground Floor Reception

No	Artist Name	Title of Artwork	Location
31	Hammond, Bill	21st Birthday Present	Hotel Ground Floor Reception
7	Hanna, Grant	I Dream of Fishes	Hotel Ground Floor Reception
15	Hannah, Collen	Mask Collection x 8	Hotel Ground Floor Reception
41	Howard, Stephen	Grey Stones	Hotel L3 Restaurant
24	Knowles, David	Lady by Open Window	Apartment Ground Floor Lobby
21	Kregar, Gregor	I Disappear (white)	Hotel Ground Floor Reception
35	Leach, Wendy	Pienza Valley	Hotel L3 Lobby
61	Lineham, Wendy	Kowaruwaru-Tanga	Apmt Lobby L5
43	Markham, Philip	Madame Butterfly	Hotel L3 Restaurant
63	McKinnon, Paulus	Queens Chain Sections	Apmt Lobby L6
32	Mee, Simon	The Attack of the 60ft Vermeer ...	Hotel Ground Floor Reception
54	Mombassa, Reg	Skirting the Rim of Hell	Hotel L4 Hallway

QUICK FIND INDEX

No	Artist Name	Title of Artwork	Location
26	Morin, Peter	I wear this on my body	Apmt Ground Floor Lobby
65	Munro, Cathryn	Per Capita	Outside the Hotel
55	Munz, Anne	Standing Dryad with Tree	Apmt Lobby L1
27	Nin, Buck	Bay of Islands-Tai Tokorau Country	Apmt Lobby Ground Floor
13	Parkin, Meredith	Shift	Hotel Ground Floor Reception
62	Parkin, Terry	Table	Apmt Lobby L6
2	Parton, Daron	The Key	Hotel Ground Floor Reception
19	Proudfoot, Dean	Tama Performs in a NZ Landscape	Hotel Ground Floor Reception
29	Proudfoot, Dean	Gordon Bowls Dick a Googly in a NZ Landscape	Apmt Lobby Ground Floor
28	Proudfoot, Dean	Billy Buys from an Honesty Box in a NZ Landscape	Apmt Lobby Ground Floor
56	Richards, Monique	No Robot	Apmt Level 1 Fitness Centre

No	Artist Name	Title of Artwork	Location
52	Roberts, Glenda	View of Oriental Parade	Hotel L4 Hallway
23	Sandri, Lynne	Native New Zealanders	Ground Floor Apmt
36	Sandri, Lynne	The Wearer Series: handbags	Hotel L3 Restaurant Lobby
48	Sandri, Lynne	Ahh...the Quarter Acre Dream	Hotel L3 Restaurant
22	Scott, Ian	McCahon 11.9.62	Hotel Ground Floor Reception
30	Singer, Angela	Flight of Fancy	Hotel Ground Floor Reception
34	Smith, Duncan	Rob Coming	Hotel L3 Restaurant Lobby
45	Smith, Duncan	Rob Going	Hotel L3 Restaurant
66	Smith, Justin	Henri Rousseau Mural	Outside Hotel
16	Smithers, Michael	Early Morning Warning	Hotel Ground Floor Reception
10	Tamburini, Massimo	MV Agusta Tamburini	Hotel Ground Floor Reception

No	Artist Name	Title of Artwork	Location
38	Tangahoe, Hariata Ropata	La Prima Donna Piotti	Hotel L3 Lobby
25	Vincent, Paul	Umeeah	Apmt Lobby Ground Floor
17	Waters, Maxine	White Torsos x2	Hotel Ground Floor Reception
12	Welch, Stephen M	Willie Nelson	Hotel Ground Floor Reception
8	White, Robin	Hills of Porirua	Hotel Ground Floor Reception
40	Wilson, Heather	Dinner at Eight, Coffee and Cake	Hotel L3 Restaurant Lobby
1	Wong, Brent	Untitled	Hotel Ground Floor Reception
51	Woollaston, Toss	The Lithographers at Work 1/10	Hotel L4 Lobby
50	Woollaston, Toss	The Figures 7/10	Hotel L4 Lobby